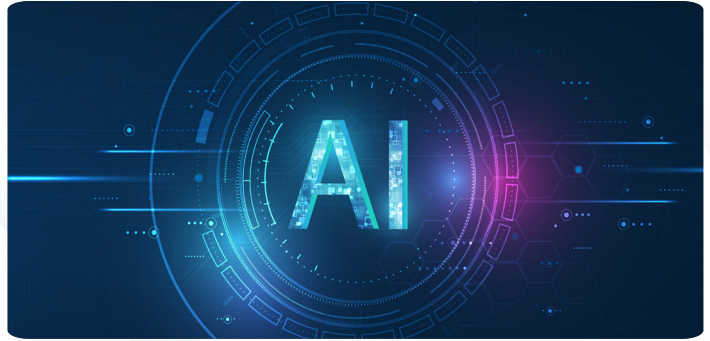


Data and AI

Overview of our Practice



AI is revolutionizing mission-critical operations and decision-making. MANTECH's Data and AI Practice, now featuring the elite pedigree of Elder Research, delivers the high-impact solutions required for mission success. Our tool-agnostic, partnership-driven approach ensures clients always lead from the cutting edge.

Key Differentiators

We prioritize speed to delivery and tailor our solutions, incorporating AI Development and Architecture design, to meet each client's unique needs. We simplify AI adoption, enabling clients to quickly harness AI capabilities and achieve rapid results. Our comprehensive approach includes designing Data and AI solutions that meet clients where they are, building and integrating solutions for deployment, and sustaining those solutions while integrating them fully with broader operations for maximum impact.

Client Success Stories and Innovative Capabilities

Our **AI Sandbox** enables a DoD client to rapidly develop, test, and deploy their own AI capabilities directly within mission systems, accelerating mission readiness and fostering self-sufficiency.

Clinician Support with Form Automation. Built with deep knowledge of data science, data engineering, and AI, MANTECH's Form Automation

for the Reserve Health Readiness Assessment will streamline DoD clinician workflows. This will allow physicians and clinicians across the Defense Health spectrum to increase time with patients and reduce potential errors.

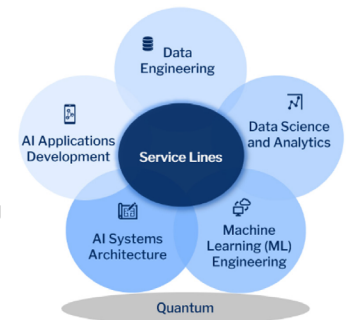
MESA-RA is a MANTECH **accelerator and extensible platform** that seamlessly integrates **Generative AI into enterprise services** and significantly enhances productivity for clients. Organizations within DHS and DoD are realizing substantial gains in efficiency leveraging MESA-RA, MANTECH's accelerator, to establish a secure and adaptable environment for AI integration.

MANTECH has the capability to containerize LLMs to deploy in restricted and unrestricted environments. Further, MANTECH has developed methods for **autoscaling resources to meet LLM usage** with the ability to scale fully down when the LLM is not in use. MANTECH is also exploring related implementations of agents to automate cumbersome IT processes.

MANTECH.com

Service Lines for Successful Data and AI Solutions

Our practice prioritizes the following service lines to design and implement solutions - ensuring scalable, trustworthy, and optimized AI integration across operational components.



Supporting National Government Imperatives

Digital Optimization: AI automates tasks, streamlines operations, and optimizes resource allocation, enabling agencies to reallocate human hours from low-value tasks to more strategic endeavors.

Intelligence Exploitation: AI-driven solutions play a critical role in timely processing and analyzing vast amounts of data - aiding analysts and operators to proactively identify and mitigate threats.

Cybersecurity: AI is revolutionizing cybersecurity by enabling real-time threat detection, analysis, and response, enhancing capabilities to meet Zero Trust requirements and mitigating insider threats.

Force and Asset Readiness: AI is ensuring mission-critical asset readiness and securing supply chains through designing and accurately predicting potential equipment failures or maintenance requirements and optimizing business efficiency.

Situational Awareness and Decision Acceleration: AI is providing executive situational awareness and decision acceleration through highly adaptable analytics platforms that reduce the cognitive overload and prioritize mission-critical information.

Data and AI Projects and Expert Offerings

End-to-End projects: These will draw on all the service lines as needed.

Sprint Team: Secure adaptable teams tailored to a wide spectrum of Data and AI implementation needs, offering flexible support and expertise levels.

Subject Matter Expert (SME) Capacity: Access our seasoned professionals for targeted expertise on your critical Data and AI projects, with various capacity-based options available.

The MANTECH Advantage: Mission Accelerated; Expertise Driven

We understand the unique challenges faced by government agencies. MANTECH unites deep data proficiency and seasoned AI professionals. We develop and integrate leading solutions tailored to your environment, offering objective guidance with a focus on open frameworks for maximum flexibility and integration provided by focusing on technology-agnostic solutions.

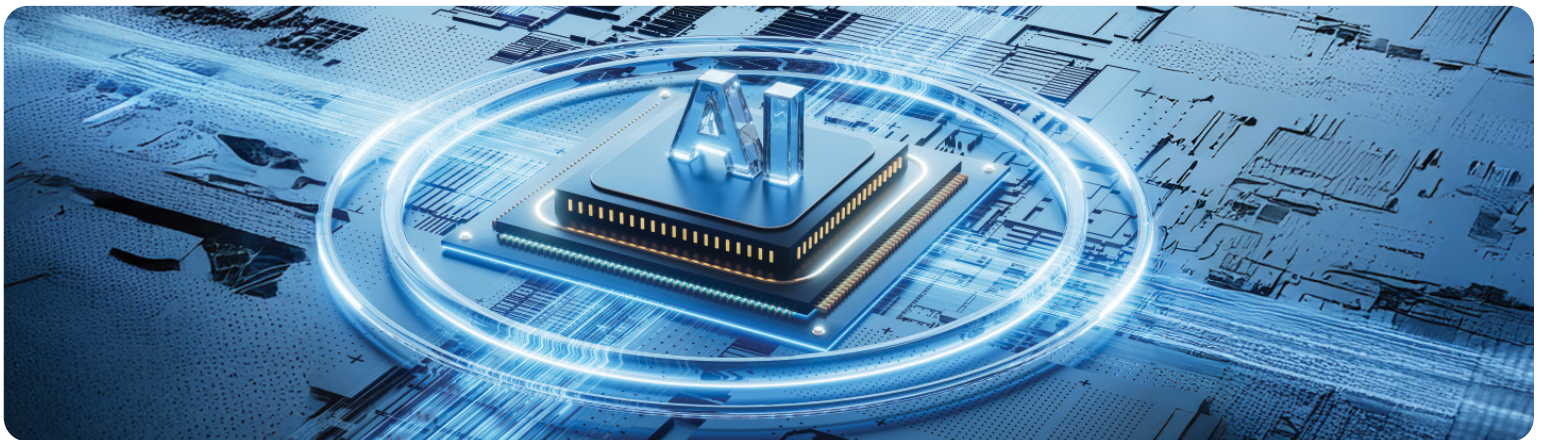
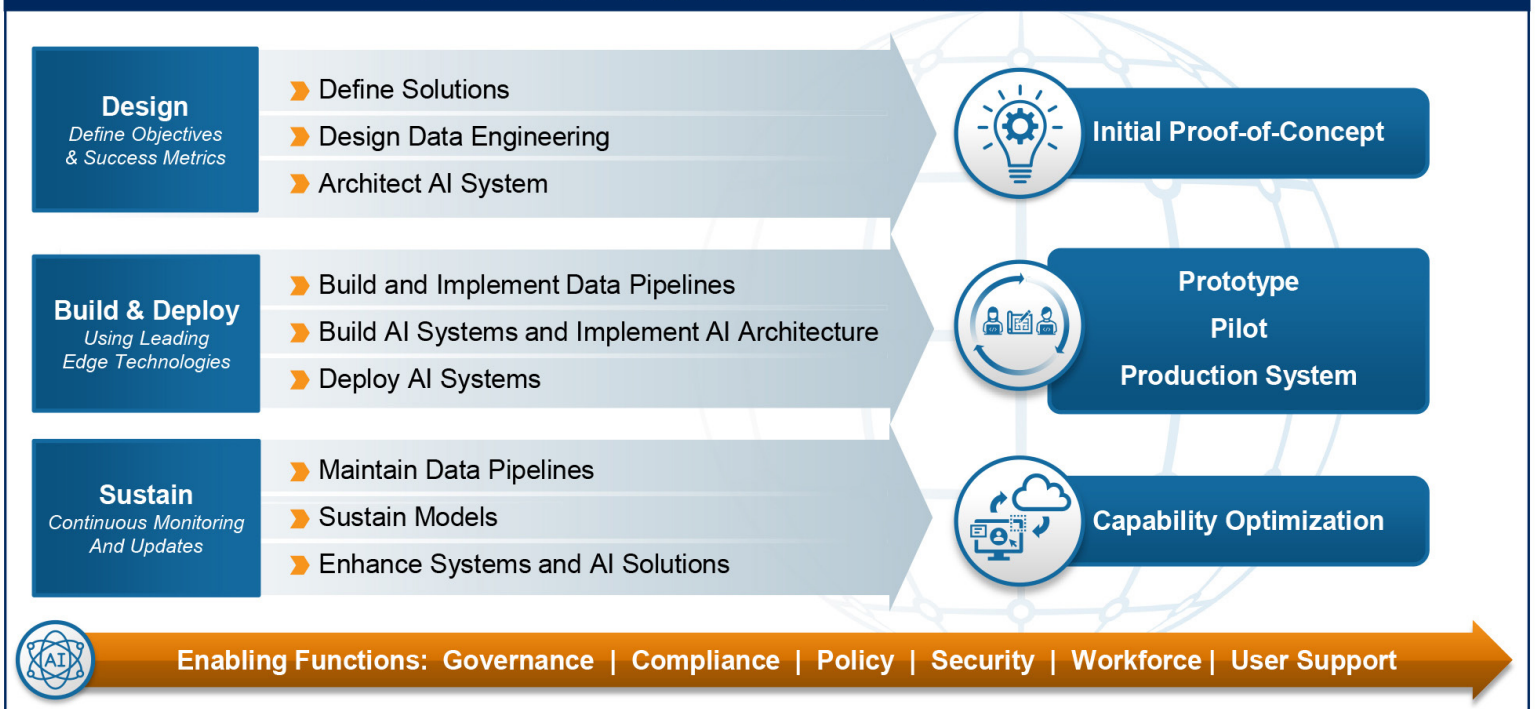
Our Commitment

Our commitment is to improve mission success with an emphasis on speed to delivery, customization to your unique needs, and ensuring successful adoption of innovative, state-of-the-art solutions. We strive to provide solutions that allow you to remain at the cutting edge, incorporating the latest advancements while minimizing unnecessary custom work to fully address your needs. MANTECH understands how to make cutting-edge technology work to address your unique challenges. Our end-to-end Data and AI implementation will ensure your needs are covered, from clearly defining how Data and AI can support your missions through to continuously optimizing your capability.

Enabling Functions

Our Enabling Functions are focused on accelerating federal agencies' ability to adopt, operationalize, and sustain modern Data and AI technologies in alignment with mission priorities. We deliver solution blueprints, technology transition support, and capabilities for all aspects of integrating technology into the enterprise and the mission. Our services avoid prolonged staffing augmentation models and instead focus on outcome-driven engagements, mission enablement, and knowledge transfer, in accordance with current OMB, GSA, and agency acquisition guidance.

END-TO-END DATA and AI IMPLEMENTATIONS



In business more than 57 years, MANTECH excels in cognitive cyber, AI, data collection & analytics, enterprise IT, systems engineering and software application development solutions that support national and homeland security.

